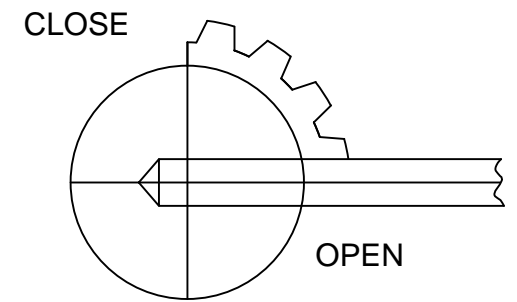
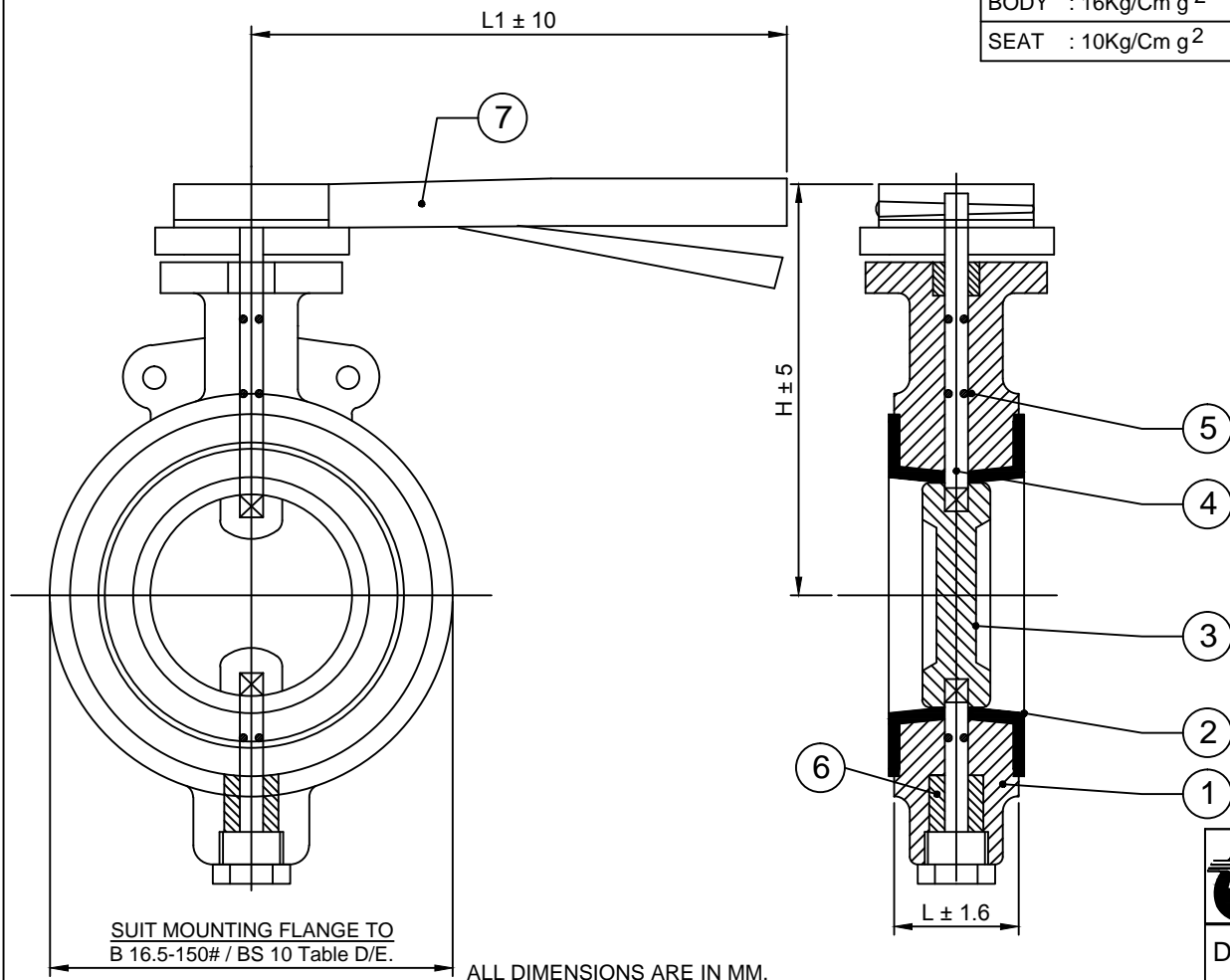


TEST PRESSURE	
HYDRAULIC TEST	
BODY	: 16Kg/Cm g ²
SEAT	: 10Kg/Cm g ²

P.NO.	PART NAME.	MATERIAL
1	BODY	CI / WCB / CF8 / CF8M / CN-7M
2	SLEEVE	NITRILE / EPDM / NEOPRENE / VITON
3	DISC	CI/ SG IRON/ WCB/ CF8/ CF8M/ CN-7M
4	STEM	SS 410/ 304/ 316/ CN-7M
5	STEM SEAL	NITRILE/ EPDM / NEOPRENE/ VITON / PTFE
6	BEARING BUSH	NITRILE/ EPDM / NEOPRENE/ DELRIN
7	HANDLE	M.S. EPOXY COATED

STANDARD	
MFG. & DESIGN	: BS 5155
INSP. & TESTING	: BS 5155/BS 6755(Part-1)
End Connection	: WAFER TO SUIT ASME B16.1 125#/ 150# DIN 2542(PN-10)/DIN 2543 (PN-16)/BS10 TABLE-E
Face to Face (WAFER SHORT)	: BS 5155



ALL DIMENSIONS ARE IN MM.

SIZE NB	50	65	80	100	125	150	200	250	300	350	400	450	500	600
L	43	46	46	52	56	56	60	68	78	92	102	114	127	154
H	163	180	192	210	230	250	310	345	430	315	345	380	415	475
L1	175	175	195	195	250	250	435	435	500	315	345	378	412	475

MULTITECH ENGINEERING

L-82, G.I.D.C. Estate, Nr. Water tank Odhav AHMEDABAD - 382415

DRN. : VASUDEV	WAFER TYPE BUTTERFLY VALVE
CHD. :	50MM TO 600MM 150#
APD. :	PRESSURE RATING - ANSI 150 #
SCALE : NTS	
DATE :	DRG.NO.: BF / 150 / 50-600 / G.D.