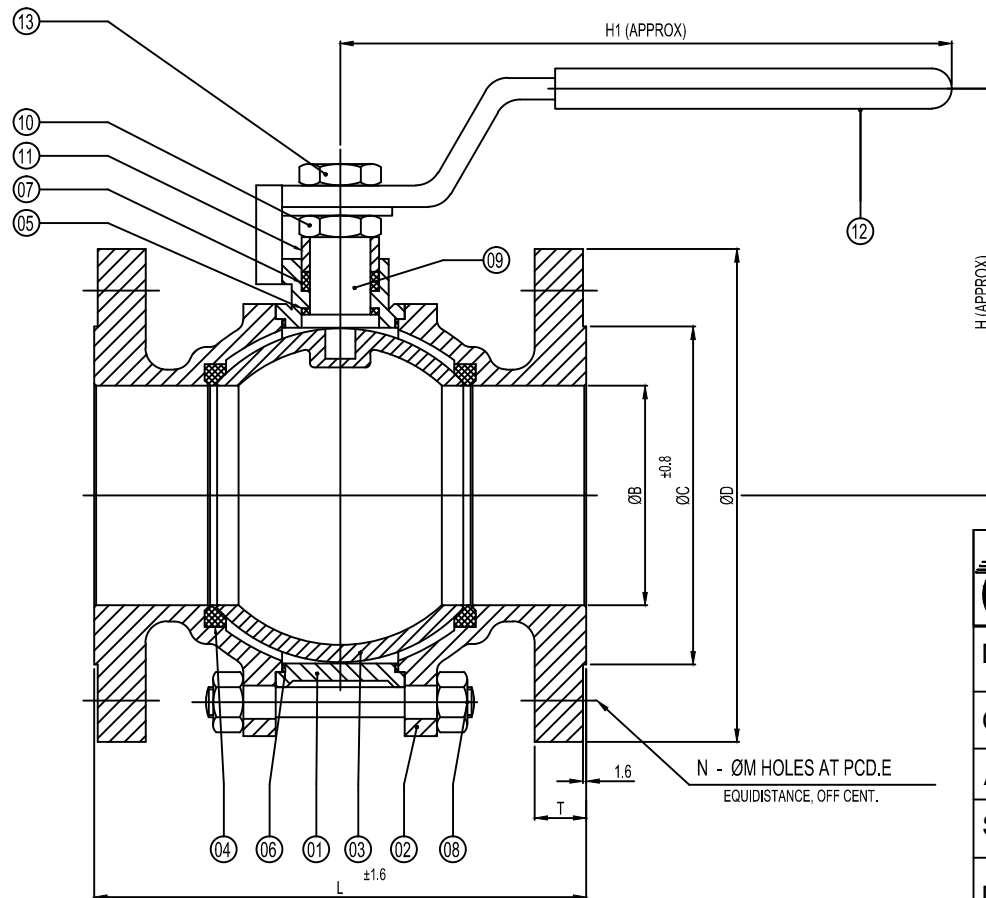


TEST CODE	BS 6755 PART : II / API 598
END	AS PER FL.END B16.5
FACE TO FACE DIMENSIONS	AS PER B16.10
DESIGN CODE	BS 5351
DESIGN SPECIFICATION	

31	21	06
BODY TEST	SEAT TEST	AIR TEST
TESTING (KG / CM) ²		

13	NUT	SS	SS	SS
12	HANDLE	CS	CS	CS
11	GLAND BUSH	SS 410	SS 304	SS 316
10	GLAND NUT	AISI 410	AISI 304	AISI 316
09	SETM	AISI 410	AISI 304	AISI 316
08	STUD & NUT	ASTM A 193 Gr.B7/2H	ASTM A 193 Gr.B8/8	ASTM A 193 Gr.B8/8M
07	GLAND PACKING	PTFE	PTFE	PTFE
06	BODY GASKET	PTFE	PTFE	PTFE
05	STEM RING	PTFE	PTFE	PTFE
04	SEAT	PTFE	PTFE	PTFE
03	BALL	SS 304	SS 304	SS 316
02	SIDE PIECE	ASTM A 216 Gr. WCB	ASTM A 351 Gr. CF8	ASTM A 351 Gr. CF8M
01	BODY	ASTM A 216 Gr. WCB	ASTM A 351 Gr. CF8	ASTM A 351 Gr. CF8M
SR.NO.	PARTS NAME	WCB	S.S.304	S.S.316



CLASS	150#									
SIZE	L	ØB	ØC	ØD	T	H	H1	E-PCD	N x ØM	
50MM	178	50	91.95	150	15.8	105	250	120.7	4 x 19	
65MM	190	65	104.65	180	17.5	115	250	140	4 x 19	
80MM	203	76	127	190	19.1	130	300	152.4	4 x 19	
100MM	229	102	157.2	230	23.9	160	400	190.5	8 x 19	
125MM	254	127	185.7	255	23.9	175	450	216	8 x 22	
150MM	267	152	215.9	280	25.4	205	450	241.3	8 x 22	



MULTITECH ENGINEERING

L-82, G.I.D.C. Estate, Nr. Water tank Odhav AHMEDABAD - 382415

DRN. : VASUDEV

2WAY 3PC BALL VALVE 150#

CHD. :

FL. END ASA 50MM TO 150MM

APD. :

PRESSURE RATING - ANSI 150 #

SCALE : NTS

DATE :

DRG.NO.: BLV / 150 / 50-150 / GA.