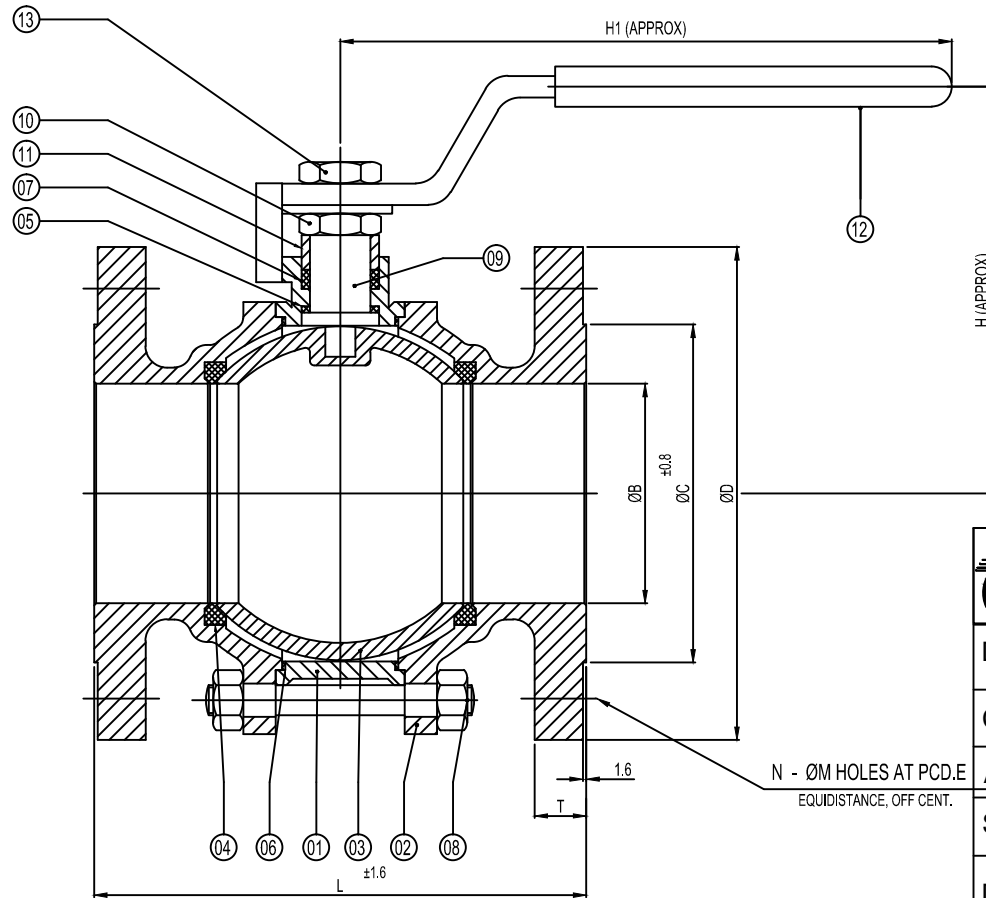


TEST CODE	BS 6755 PART : II / API 598
END	AS PER FL.END B16.5
FACE TO FACE DIMENSIONS	AS PER B16.10
DESIGN CODE	BS 5351
DESIGN SPECIFICATION	

79	58	07
BODY TEST	SEAT TEST	AIR TEST
TESTING (KG / CM ) <sup>2</sup>		

13	NUT	SS	SS	SS
12	HANDLE	CS	CS	CS
11	GLAND BUSH	SS 410	SS 304	SS 316
10	GLAND NUT	AISI 410	AISI 304	AISI 316
09	SETM	AISI 410	AISI 304	AISI 316
08	STUD & NUT	ASTM A 193 Gr.B7/2H	ASTM A 193 Gr.B8/8	ASTM A 193 Gr.B8/8M
07	GLAND PACKING	PTFE	PTFE	PTFE
06	BODY GASKET	PTFE	PTFE	PTFE
05	STEM RING	PTFE	PTFE	PTFE
04	SEAT	PTFE	PTFE	PTFE
03	BALL	SS 304	SS 304	SS 316
02	SIDE PIECE	ASTM A 216 Gr. WCB	ASTM A 351 Gr. CF8	ASTM A 351 Gr. CF8M
01	BODY	ASTM A 216 Gr. WCB	ASTM A 351 Gr. CF8	ASTM A 351 Gr. CF8M
SR.NO.	PARTS NAME	WCB	S.S.304	S.S.316



CLASS	300#								
SIZE	L	ØB	ØC	ØD	T	H	H1	E-PCD	N x ØM
50MM	178	50	91.95	165	22.35	105	250	127	8 x 19
65MM	190	65	104.65	190	25.4	115	250	149.35	8 x 22
80MM	203	76	127	210	28.45	130	300	168.14	8 x 22
100MM	229	102	157.2	255	31.75	160	400	200.15	8 x 22
125MM	254	127	185.7	280	35	175	450	234.95	8 x 22
150MM	267	152	215.9	320	36.57	205	450	269.74	12 x 22



# MULTITECH ENGINEERING

L-82, G.I.D.C. Estate, Nr. Water tank Odhav AHMEDABAD - 382415

DRN. : VASUDEV  
 CHD. :  
 APD. :  
 SCALE : NTS  
 DATE :

2WAY 3PC BALL VALVE 300#  
 FL. END ASA 50MM TO 150MM  
 PRESSURE RATING - ANSI 300 #  
 DRG.NO.: BLV / 300 / 50-150 / GA.