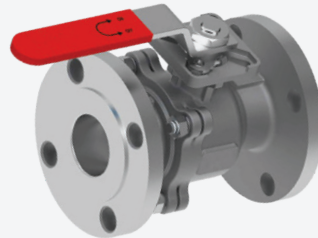
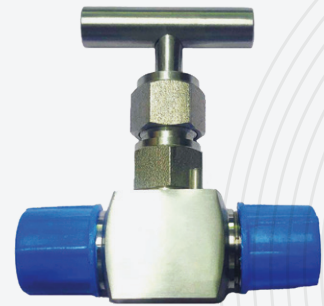




**MULTITECH**  
ENGINEERING

# GATE, GLOBE, CHECK, BALL, NEEDLE VALVE AND STRAINER



Mfg. of Industrial Valves



[info@multitecheng.com](mailto:info@multitecheng.com)



[multitecheng@gmail.com](mailto:multitecheng@gmail.com)

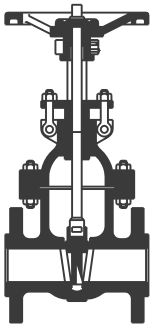
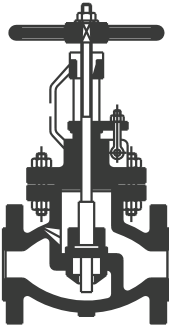
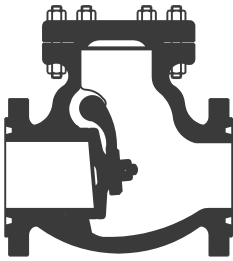
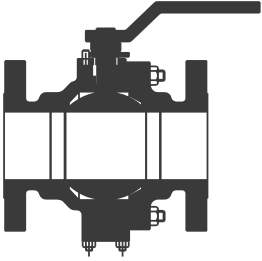


[www.multitecheng.com](http://www.multitecheng.com)



(079) 22877661

# VALVE MANUFACTURING PRODUCT RANGE

					
Valve Type	GATE VALVE	GLOBE VALVE	CHECK VALVE	BALL VALVE	
				Sand Casting	Investment Casting
Valve Size	½" NB to 16" NB	½" NB to 16" NB	½" NB to 16" NB	½" NB to 12" NB	¼" NB to 6" NB
Pressure Class	150#, 300#, 600# (Casting) 800#,1500# (Forging)				150#
Temperature	-20° F to 1200° F				
Construction Details	- Bolted Bonnet - OS &Y type - Stationary Hand wheel	- Bolted Bonnet - OS &Y type - Rising Hand Wheel	- Bolted Cover - Swing/Lift type	- 2 Piece/3 Piece - Floating Ball / Trunnion-Mounted	- 2 Piece/3 Piece - Floating Ball
Design Standards	API 600 API 602 API 6D ANSI B16.34	BS 1873 ANSI 16.34	BS 1868 API 6D ANSI 16.34	BS 17292 BS 5351 API 6D	BS 17292 API 6D
Ends	Flanged to ANSI B 16.5 Butt Welded to ANSI B16.25 Socket Welded to ANSI B16.11				
Face to Face	ANSI B 16.10				
Material of Construction	WCB, WCC, LCB, LCC, WC6, WC9, C5, C12, CF3, CF3M, CF8, CF8M - (Casting) A105, LF2, 304,304L,316,316L - (Forging)				
Operation	Manual Operation		Gear Operation		Actuator Operation
Accessories	Bypass Arrangement Locking Devices Position Indicator				
Specific Features	Fire Safe Anti-Static (Ball valve) Blow-out proof Stem Extended bonnet (Cryogenic Service) NACE / H2 Service				

# GATE VALVE

## Casting



### Manufacturing Range :

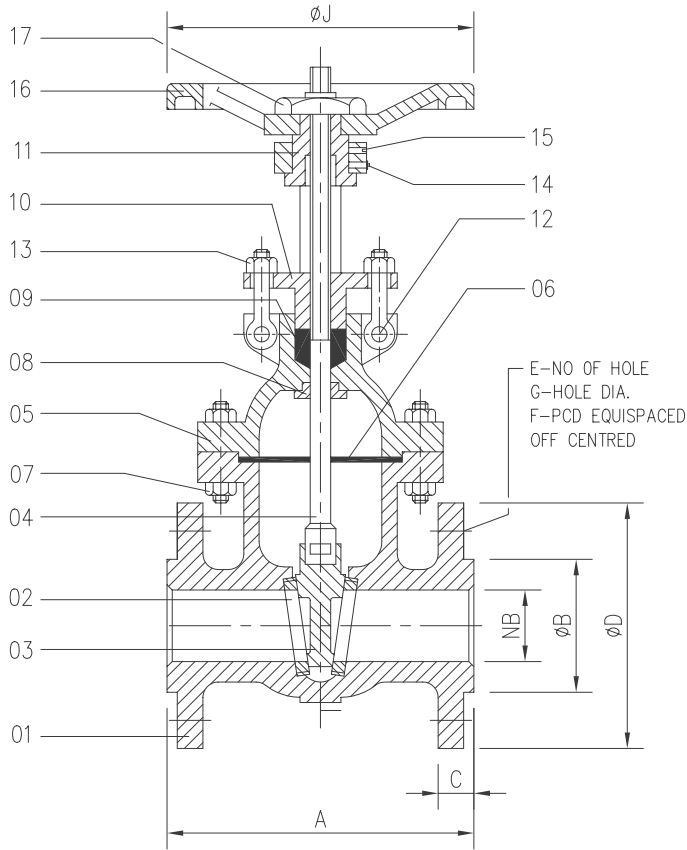
- 1) Size: 2" NB to 16" NB
- 2) Class: 150#, 300#, 600#
- 3) Materials: WCB, LCB, CF8, CF8M, CF3, CF3M

### Specific Features

- Outside Screw & Yoke type.
- Erosion and abrasion resistance stem
- Fully guided Wedge to ensure proper alignment while seating
- Hard faced (Stellite-6) seating surfaces also available.

## Standards :

Design Standard	API 600 / ASME B16.34
Inspection & Testing Standard	API 598
Face to Face	ASME B16.10
Flange Connection	ASME B16.5
Butt Weld Connection	ASME B16.25
Pressure Temperature Rating	ASME B16.34



P. NO.	ITEM	QTY.	MATERIAL
1	BODY	1	C.S. ASTM A 216 Gr. WCB
			C.I. TO IS 210 Gr. FG 220
			ASTM A 351 CF8/CF8M/CN7M
2	SEAT RING	2	C.S. ASTM A 216 Gr. WCB
			AISI 304/AISI 316/AISI 410
3	WEDGE	1	C.S. WITH 13% Cr. FACING
			AISI 304/AISI 316
4	SPINDLE	1	AISI 410/AISI 304/AISI 316
5	BONNET	1	C.S. ASTM A 216 Gr. WCB
			C.I. TO IS 210 Gr. FG 220
			ASTM A 351 CF8/CF8M/CN7M
6	GASKET	1	SPRIAL WOUND METALIC GASKET
7	BONNET STUD & NUT	Req.	ASTM A 193 Gr. B7
			ASTM A 194 Gr. 2H
8	BONNET BUSH	1	AISI 410/AISI 304/AISI 316
9	GLAND PACKING	6 MIN.	METAUC WIRE REINFORCED
			ASBESTOS/GRAPHOIL
10	GLAND	1	C.S. ASTM A 216 Gr. WCB
11	YOKE BUSH	1	G.M./AISI 304
12	CROSS BOLT/NUT	2	CARBON STEEL
13	EYE BOLT/NUT	2	CARBON STEEL
14	GREASE NIPPLE	1	CARBON STEEL
15	GRUB SCREW	1	CARBON STEEL
16	HAND WHEEL	1	C.I./C.S.
17	HAND WHEEL NUT	1	CARBON STEEL

ASA - 150								
SIZE NB	A	ØB	C	ØD	E	F	ØG	ØJ
25	127	51	14	108	4	79	16	123
40	165	73	14	127	4	98	16	152
50	178	92	16	152	4	121	19	203
65	190	105	17	178	4	140	19	203
80	203	127	19	190	4	152	19	254
100	229	157	24	229	8	190	19	305
125	254	186	24	254	8	216	22	305
150	267	216	25	278	8	241	22	356
200	292	270	29	343	8	298	22	356
250	330	324	30	406	12	362	25	406
300	356	381	32	483	12	431	25	457
350	381	413	35	534	12	477	29	508
400	406	470	37	597	16	540	29	508

ASA - 600								
SIZE NB	A	ØB	C	ØD	E	F	ØG	ØJ
40	241	73	22	156	4	114	22	250
50	292	92	25	165	8	127	19	300
65	330	105	28	190	8	149	22	300
80	356	127	32	210	8	168	22	405
100	432	157	38	273	8	216	25	490
125	508	186	44	330	8	267	29	490
150	559	216	48	356	12	292	29	610
200	660	270	56	419	12	349	32	675
250	787	324	64	508	16	432	35	825
300	838	381	67	559	16	489	35	825
350	889	413	70	600	20	527	38	825
400	991	470	76	686	20	603	41	1000

ASA - 300								
SIZE NB	A	ØB	C	ØD	E	F	ØG	ØJ
40	191	73	21	156	4	114	22	152
50	216	92	22	165	8	127	22	203
65	241	105	25	190	8	149	22	203
80	282	127	29	209	8	168	22	254
100	305	157	32	254	8	200	22	305
125	381	186	35	279	8	235	22	356
150	403	216	37	318	12	270	22	356
200	419	270	41	381	12	330	25	406
250	457	324	48	445	16	387	29	457
300	502	381	51	521	16	451	32	508
350	572	413	54	585	20	515	32	508
400	838	470	58	648	20	572	35	508



# GATE VALVE

# Forging



## Manufacturing Range :

- 1) Size: ¼" NB to 2" NB
- 2) Class: 800#, 1500#
- 3) Materials: A105, LF2, F5, F11, A182 (F304 / F316)

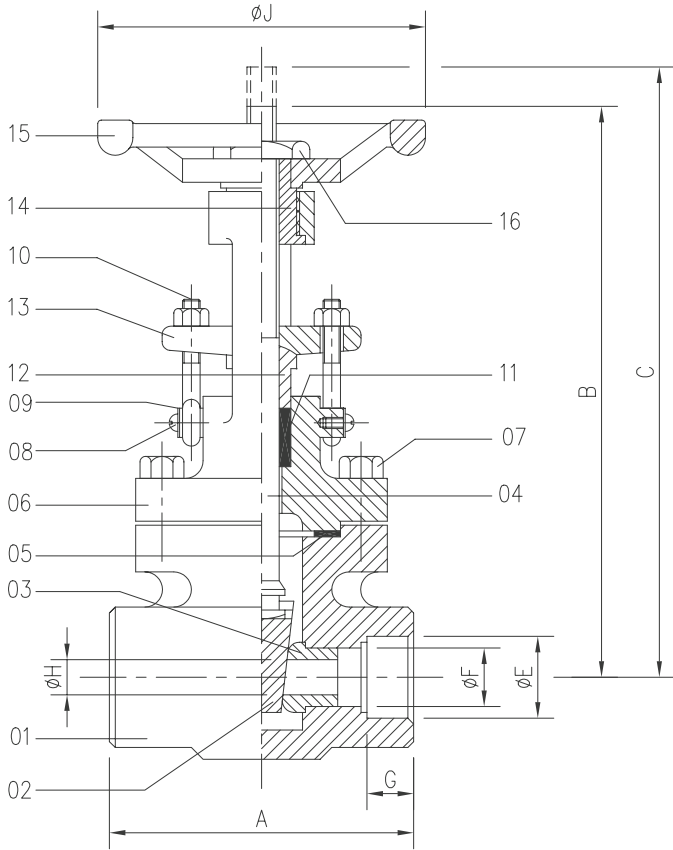
## Specific Features :

- OS & Y Type Rising Stem
- Hardened Stem.
- Threaded and seal welded bonnet
- Safer & Tighten stem seal.
- Renewable Seat Ring & Back Seat arrangement Design.
- Fully guided wedge reduce wear on seating surfaces.
- Hard faced (Stellite-6) seating surfaces also available.
- Two piece self-aligning packing gland

## Standards :

Design Standard	API 602
Inspection & Testing Standard	API 598 / BS 6755 Part 1
Socket Weld End	ASME B16.11
Screwed End	ASME B20.1
Butt Weld Connection	ASME B16.25
Pressure Temperature Rating	ASME B16.34

P. NO.	ITEM	QTY.	MATERIAL
1	BODY	1	A 105
			A 182 (F 304)
			A 182 (F 316)
2	WEDGE	1	AISI 410/AISI 304/AISI 316
			AISI 410/AISI 304/AISI 316
4	STEM	1	AISI 410/AISI 304/AISI 316
			SPIRAL WOUND S.S. 304 WITH CAF FILLER
6	BONNET	1	A 105
			A 182 (F 304)
			A 182 (F 316)
			ASTM A 193 Gr. B7
			ASTM A 194 Gr. 2H
8	CAP HEAD SCREW	2	CARBON STEEL
			CARBON STEEL
10	EYE BOLTS/NUTS	2	CARBON STEEL
			CARBON STEEL
11	GLAND PACKING	6 MIN.	ASBESTOS GRAPHITED WITH
			INCONEL WIRE
12	GLAND BUSH	1	AISI 410/AISI 304/AISI 316
13	GLAND PLATE	1	CARBON STEEL
14	YOKE SLEEVE	1	AISI 304/AISI 316/EN 19
15	HAND WHEEL	1	MALLEABLE IRON
16	HAND WHEEL NUT	1	CARBON STEEL
16	HAND WHEEL	1	C.I./C.S.



ASA - 800				
SIZE NB	A	J	C	B
15 MM	73	86	151	135
20 MM	80	86	157	137
25 MM	100	116	186	162
40 MM	120	150	237	201
50 MM	130	150	268	223

ASA - 1500				
SIZE NB	A	J	C	B
15 MM	80	86	151	138
20 MM	100	116	178	162
25 MM	120	150	227	207
40 MM	130	150	256	224
50 MM	140	225	303	263

# GLOBE VALVE

# Casting



## Manufacturing Range :

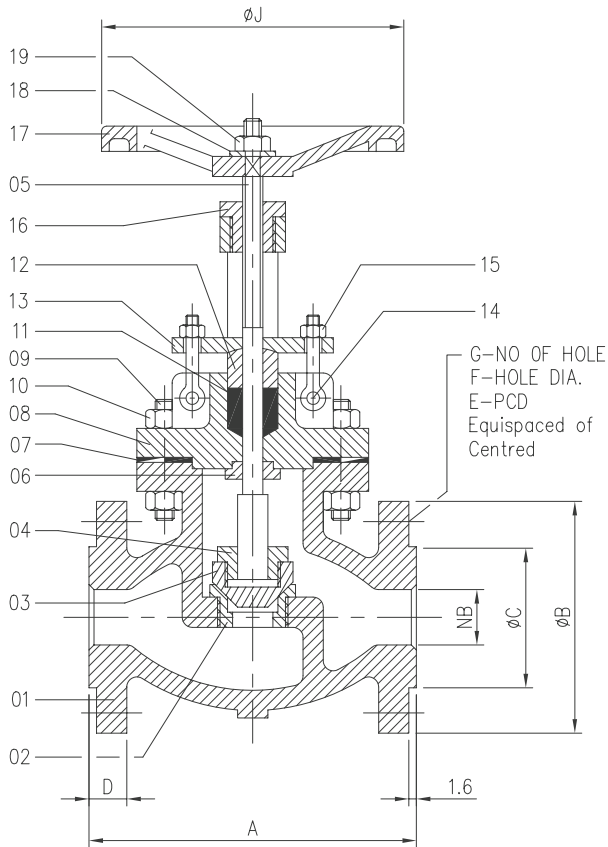
- 1) Size: 2" NB to 16" NB
- 2) Class: 150#, 300#, 600#
- 3) Materials: WCB, LCB, CF8, CF8M, CF3, CF3M

## Specific Features

- Outside Screw & Yoke type.
- Erosion and abrasion resistance stem
- Fully guided Wedge to ensure proper alignment while seating
- Hard faced (Stellite-6) seating surfaces also available.
- Angle type design also can be provided.

## Standards :

Design Standard	BS 1873 / ASME B16.34
Inspection & Testing Standard	API 598 / BS 1873 / BS 6755
Face to Face	ASME B16.10
Flange Connection	ASME B16.5
Butt Weld Connection	ASME B16.25
Pressure Temperature Rating	ASME B16.34



P. NO.	ITEM	QTY.	MATERIAL
1	BODY	1	ASTM A 216 Gr. WCB
			C.I. TO IS 210 Gr. FG 220
			ASTM A 351 CF8/CF8M/CN7M
2	SEAT	1	S.S. 13% Cr.
			AISI 304/AISI 316
3	DISC	1	C.S. WITH 13% Cr. FACING
			AISI 410/AISI 304/AISI 316
4	SPINDLE NUT	1	AISI 410/AISI 304/AISI 316
5	SPINDLE	1	AISI 410/304/316
			AISI 410/304/316
			S.S. 304 SPIRAL WOUND
			METALIC GASKET
8	BONNET	1	ASTM A 216 Gr. WCB
			C.L TO IS 210 Gr. FG 220
			ASTM A 351 CF8/CF8M/CN7M
9	BONNET STUD	Req.	ASTM A 193 Gr. B7
10	BONNET STUD NUT	Req.	ASTM A 194 Gr. 2H
11	GLAND PACKING	Req.	METALIC WIRE REINFORCED
			GRAPHITED ASBESTOS / GRAPHOIL
12	GLAND	1	AISI 410/304/316
13	GLAND FLANGE	1	CARBON STEEL
14	CROSS BOLT/NUT	2 / 2	CARBON STEEL
15	EYE BOLT/NUT	2 / 2	CARBON STEEL
16	YOKE NUT	1	AL. BRONZE/NI-RESIST
17	HAND WHEEL	1	DUCTILE IRON
18	WASHER	1	CARBON STEEL
19	HAND WHEEL NUT	1	CARBON STEEL

ASA - 150								
SIZE NB	A	ØB	C	ØD	E	F	ØG	ØJ
25	127	108	51	11	79	16	4	150
40	165	127	73	14	98.5	16	4	210
50	203	152	92	16	121	19	4	210
65	216	178	105	17.5	140	19	4	255
80	241	191	127	19	154	19	4	255
100	292	229	157	24	191	19	8	405
125	356	254	186	24	216	22	8	490
150	406	279	216	25	241	22	8	490
200	495	343	270	28.5	298	22	8	610
250	622	406	324	30	362	25	12	625
300	698	483	381	32	432	25	12	625

ASA - 600								
SIZE NB	A	ØB	C	ØD	E	F	ØG	ØJ
25	216	124	51	17.5	89	19	4	210
40	241	156	73	22	114	22	4	228
50	292	165	92	25	127	19	8	305
65	330	191	105	29	149	22	8	356
80	356	210	127	32	168	22	8	405
100	432	273	157	38	216	25	8	490
125	508	330	186	45	267	29	8	490
150	559	356	216	48	292	29	12	610
200	660	419	270	56	349	32	12	675
250	787	508	324	64	432	35	16	825
300	838	559	381	67	489	35	20	825

ASA - 300								
SIZE NB	A	ØB	C	ØD	E	F	ØG	ØJ
25	203	124	51	17.5	89	19	4	210
40	229	156	73	20.5	114	22	4	250
50	267	165	92	22	127	19	8	250
65	292	190	105	25	149	22	8	405
80	318	209	127	28.5	168	22	8	405
100	356	254	157	32	200	22	8	490
125	375	279	186	35	235	22	8	490
150	445	318	216	36.5	270	22	12	490
200	533	381	270	41	330	25	12	610
250	622	445	324	47.5	387	29	16	610
300	711	521	381	51	451	32	16	610

# GLOBE VALVE

# Forging



## Manufacturing Range :

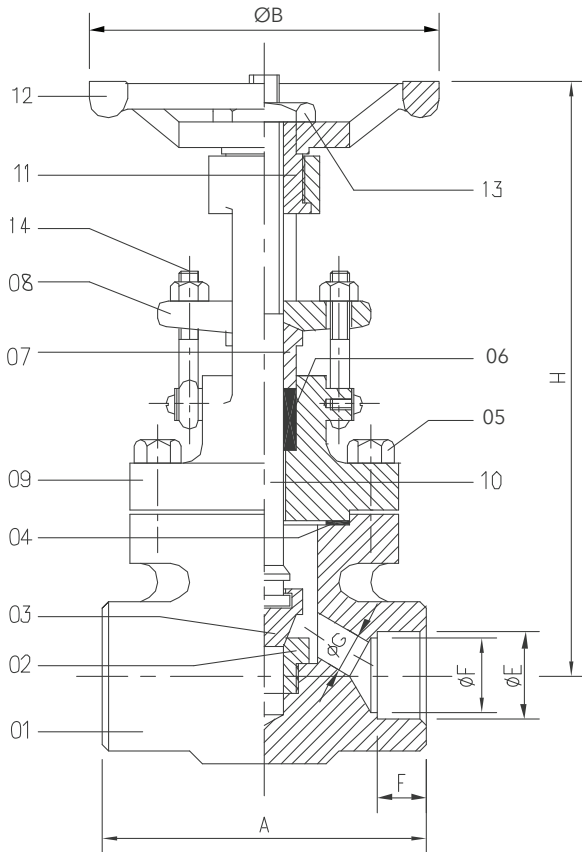
- 1) Size: ¼" NB to 2" NB
- 2) Class: 800#, 1500#
- 3) Materials: A105, LF2, F5, F11, A182 (F304 / F316)

## Specific Features :

- OS & Y Type Rising Stem
- Hardened Stem.
- Threaded and seal welded bonnet
- Safer & Tighten stem seal.
- Renewable Seat Ring & Back Seat arrangement Design.
- Fully guided wedge reduce wear on seating surfaces.
- Hard faced (Stellite-6) seating surfaces also available.
- Two piece self-aligning packing gland

## Standards :

Design Standard	BS 5352
Inspection & Testing Standard	API 598 / BS 6755 Part 1
Socket Weld End	ASME B16.11
Screwed End	ASME B20.1
Butt Weld Connection	ASME B16.25
Pressure Temperature Rating	ASME B16.34



P. NO.	ITEM	QTY.	MATERIAL
1	BODY	1	A 1D5
			A 182 (F 304)
			A 1B2 (F 316)
2	SEAT	1	AISI 410/AISI 3D4/AISI 316 AISI 410/AISI 3D4/AISI 316
3	GASKET	1	SPIRAL WOUND S.S. 304 WITH CAP FILLER
4	BODY BOLTS/NUTS	Req.	ASTM A 193 Gr. B7
5			ASTM A 194 Gr. 2H
			ASBESTOS GRAPHITED WITH INCONEL WIRE
6	GLAND BUSH	1	AISI 410/AISI 3D4/AISI 316
7	GLAND PLATE	1	CARBON STEEL
8			A 1B2 (F 304)
9			A 1B2 (F 316)
10	STEM	1	AISI 410/AISI 3D4/AISI 316
11	YOKE NUT	1	AISI 304/AISI 316/EN 19
12	HAND WHEEL	1	MALLEABLE IRON
13	HAND WHEEL NUT	1	CARBON STEEL
14	EYE BOLT/NUT	1	CARBON STEEL

ASA - 800			
SIZE NB	A	H	B
15 MM	73	143	86
20 MM	80	146	86
25 MM	100	171	116
40 MM	145	199	150
50 MM	160	236	150

ASA - 1500			
SIZE NB	A	H	B
15 MM	80	148	86
20 MM	100	187	116
25 MM	145	204	150
40 MM	160	261	150
50 MM	172	290	225



# CHECK VALVE

# Casting



## Manufacturing Range :

- 1) Size: 2" NB to 16" NB
- 2) Class: 150#, 300#, 600#
- 3) Materials: WCB, LCB, CF8, CF8M, CF3, CF3M

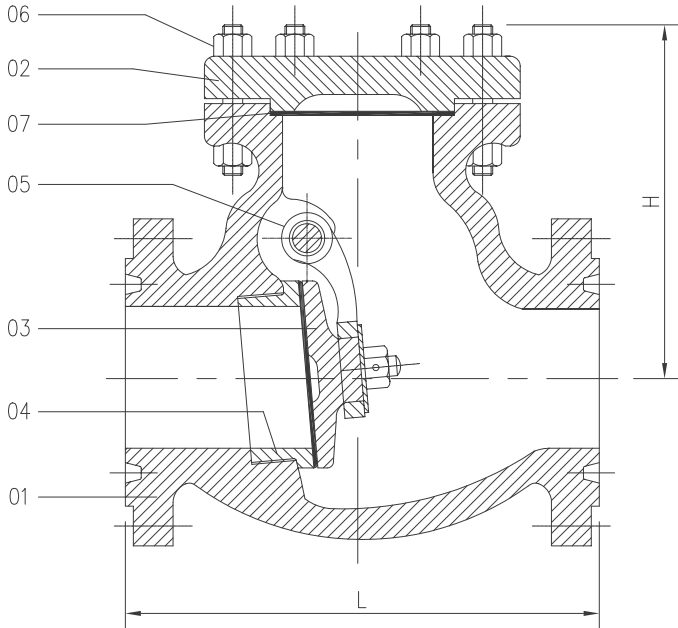
## Specific Features

- Swing Type Disc
- Suitable for the horizontal & vertical pipe runs.
- Bolted Cover.
- All parts are accessible from the top for easy servicing.
- Hard faced (Stellite-6) seating surfaces also available.
- The design offers a low-pressure drop operation, which makes the valve more energy efficient.

## Standards :

Design Standard	BS 1868 / API 6D / ASME B16.34
Inspection & Testing Standard	API 598 / BS 1868 / BS 6755
Face to Face	ASME B16.10
Flange Connection	ASME B16.5
Butt Weld Connection	ASME B16.25
Pressure Temperature Rating	ASME B16.34

P. NO.	ITEM	QTY.	MATERIAL
1	BODY	1	ASTM A 216 Gr. WCB
			C.I. TO IS 210 Gr. FG 220
			ASTM A 351 Gr.CF8/CF8M/CN7M
2	COVER PLATE	1	ASTM A 216 Gr. WCB
			C.I. TO IS 210 Gr. FG 220
			ASTM A 351 Gr.CF8/CF8M/CN7M
3	DISC	1	C.S. WITH 13% Cr. FACING
			S.S.316/S.S.304
			TEFLON COATING OPTION
5	SEAT RING	1	C.S. WITH 13% Cr. FACING
			Integral Seat For Alloy Steel Valve
			AISI 304/AISI 316
5	DISC HINGE	1	ASTM A 216 Gr. WCB
			C.I. TO IS 210 Gr. FG 220
			ASTM A 351 Gr.CF8/CF8M/CN7M
6	STUD & NUT	Req.	ASTM A 193 Gr. B7
			ASTM A 194 Gr. 2H
7	COVER GASKET	1	SPIRAL WOUND SS 304 WITH CAF



NB	ASA-150		ASA-300		ASA-600	
	L	H	L	H	L	H
40	165	138	241	159	241	175
50	203	152	267	176	292	190
65	216	161	292	187	330	200
80	241	173	317	194	356	205
100	292	200	356	257	432	229
150	355	247	445	284	558	311
200	495	284	533	331	660	375
250	622	327	622	368	787	378
300	698	353	711	400	838	435
350	787	461	812	511	889	565
400	914	498	838	552	990	592
450	914	527	914	581	1092	642
500	940	581	990	616	1193	694
600	965	622	1143	664	1397	735

# CHECK VALVE

# Forging



## Manufacturing Range :

- 1) Size: ¼" NB to 2" NB
- 2) Class: 800#, 1500#
- 3) Materials: A105, LF2, F5, F11, A182 (F304 / F316)

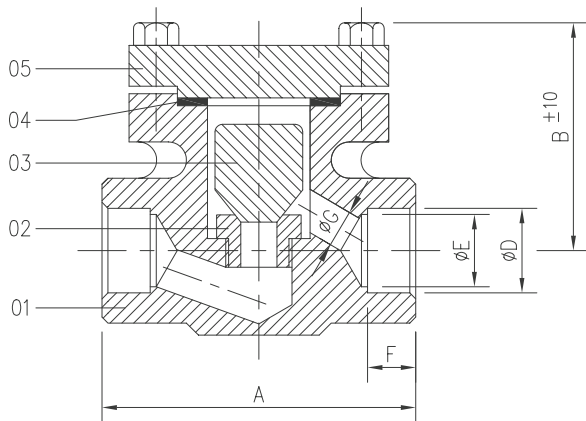
## Specific Features :

- Hard faced (Stellite-6) seating surfaces also available
- Horizontal Piston type Integral hard face Seat Design.
- Design appropriate for high-pressure temperature service.
- Two piece self-aligning packing gland.

## Standards :

Design Standard	BS 5351
Inspection & Testing Standard	API 598 / BS 6755 Part 1
Face to Face	ASME B16.11
Flange Connection	ASME B20.1
Butt Weld Connection	ASME B16.25
Pressure Temperature Rating	ASME B16.34

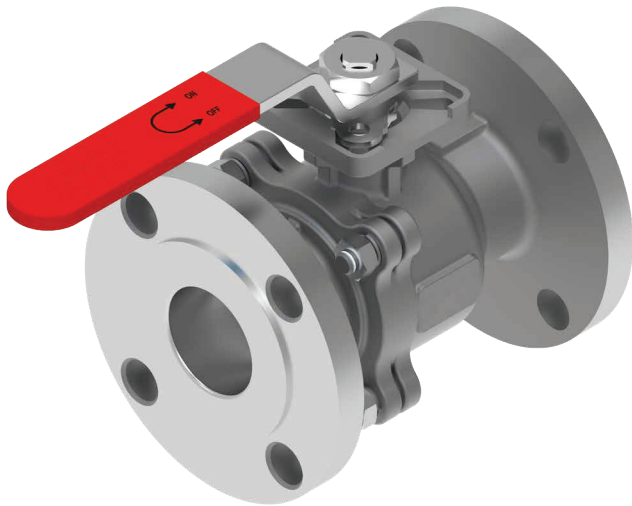
P. NO.	ITEM	QTY.	MATERIAL
1	BODY	1	A 105
			A 182 (F 304)
			A 182 (F 316)
2	SEAT RING	1	AISI 410
			AISI 304
			AISI 316
3	VALVE	1	AISI 410
			AISI 304
			AISI 316
4	GASKET	1	SPIRAL WOUND S.S. 304 WITH CAF FILLER
5	COVER	1	A 105
			A 182 (F 304)
			A 182 (F 316)



SCREWED / SOCKET WELD		
SIZE	A	B
15	87	61
20	95	67
25	106	67
40	140	95
50	144	110

# BALL VALVE

Investment Casting  
2PC / 3PC Design



## Manufacturing Range :

- 1) Size: ¼" NB to 6" NB
- 2) Class: 150#
- 3) Materials: WCB, LCB, CF8, CF8M, CF3, CF3M

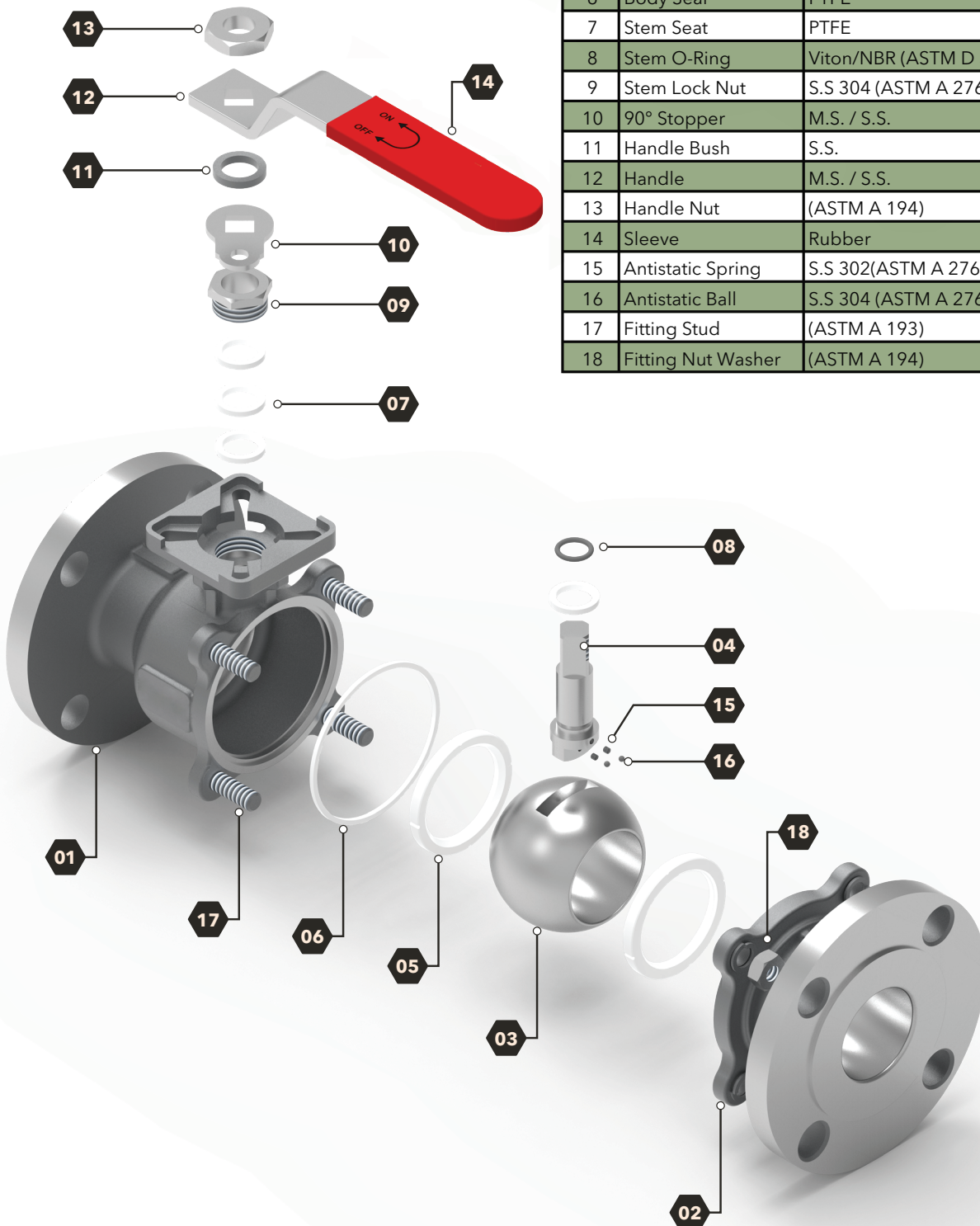
## Specific Features

- Positive Shut-off.
- Compact Design.
- Low-Pressure Drop.
- Longer Life.
- No Lubrication.
- Quick in Action.
- High-Performance
- Stainless steel locking handle.
- Visual Open / Close Indication Simplicity.
- Flanged End, Screwed End BSP/NPT, Butt Weld End.
- Anti-blowout stem

## Standards :

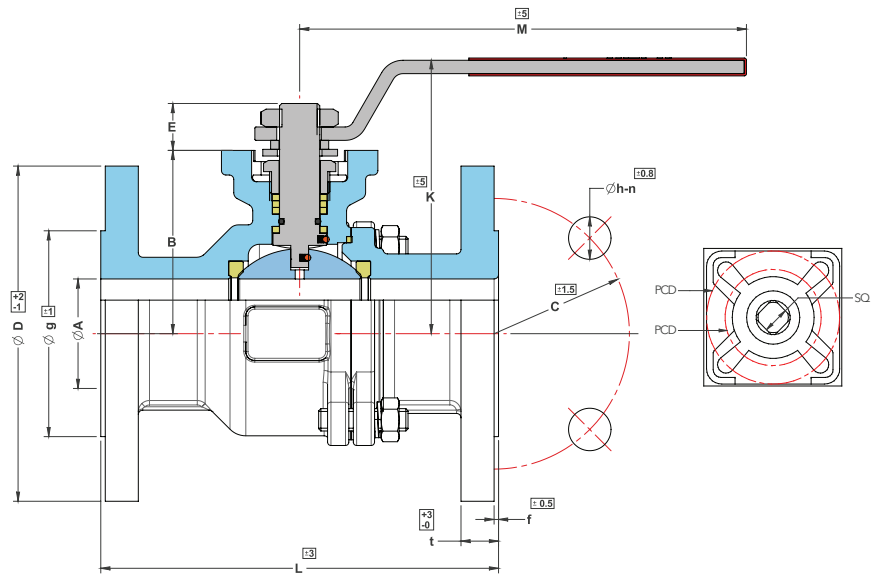
Design Standard	BS 5361 / API 6D / ISO17292
Inspection & Testing Standard	API 598 / BS 5146 / BS 6755
Face to Face	ASME B16.10
Flange Connection	ASME B16.5
Top Flange	ISO 5211 (Direct Mount)

Sr. No.	Description	Material	Qty.
1	Body	WCB (ASTM A 216 GRADE WCB)	1
		CF8 (ASTM A 351 GRADE CF8)	
		CF8M (ASTM A 351M GRADE CF8M)	
2	F.E. Connector	WCB (ASTM A 216 GRADE WCB)	1
		CF8 (ASTM A 351 GRADE CF8)	
		CF8M (ASTM A 351M GRADE CF8M)	
3	Ball	CF8 (ASTM A 351 GRADE CF8)	1
		CF8M (ASTM A 351M GRADE CF8M)	
4	Stem	S.S 304 (ASTM A 276 TYPE 304)	1
		S.S 316 (ASTM A 276 TYPE 316)	
5	Ball Seat	PTFE / PEEK / DELRIIN	2
6	Body Seal	PTFE	1
7	Stem Seat	PTFE	4
8	Stem O-Ring	Viton/NBR (ASTM D 3187 GRADE NBR)	1
9	Stem Lock Nut	S.S 304 (ASTM A 276 TYPE 304)	1
10	90° Stopper	M.S. / S.S.	1
11	Handle Bush	S.S.	1
12	Handle	M.S. / S.S.	1
13	Handle Nut	(ASTM A 194)	1
14	Sleeve	Rubber	1
15	Antistatic Spring	S.S 302 (ASTM A 276 TYPE 302)	2
16	Antistatic Ball	S.S 304 (ASTM A 276 TYPE 304)	2
17	Fitting Stud	(ASTM A 193)	4
18	Fitting Nut Washer	(ASTM A 194)	4



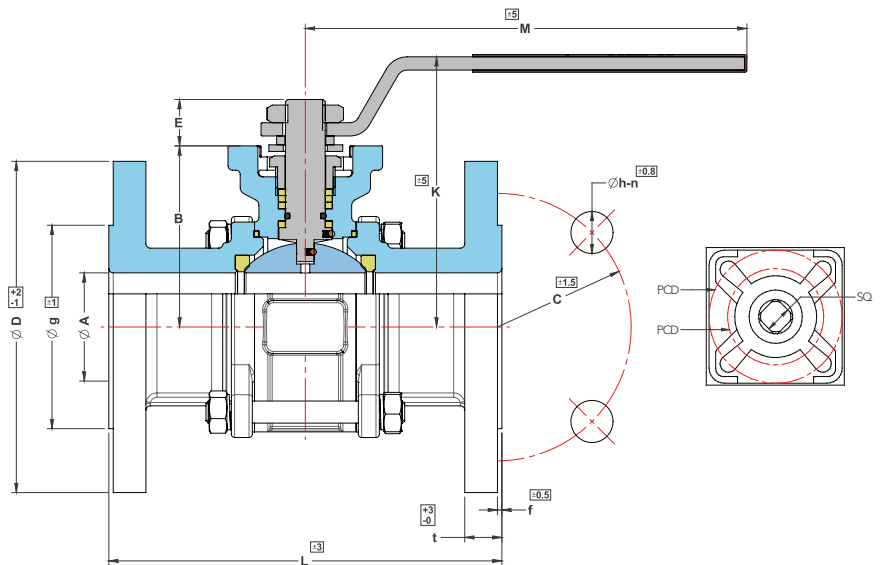


## 2 PC Ball Valve Flange End



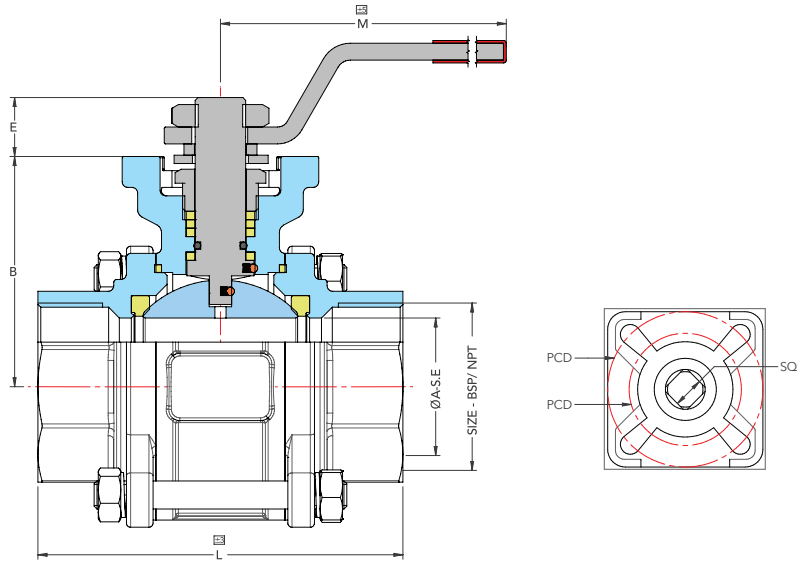
SIZE	ØA	B	E	L	K	M	ØD	C	Øh	n	t	Øg	f	w (kg) 2PC HANDLE	SQ.	PCD	E	w (kg) 2PC ACT.
1/2"	15	50	15	108	76	145	90	60.3	15.88	4	10	34.9	2	1.5	9	42/50	9	1.4
3/4"	20	55	15	117	82	145	100	69.9	15.88	4	11	42.9	2	1.96	9	42/50	9	1.83
1"	25	60.5	15	127	90	175	110	79.4	15.88	4	12	50.8	2	2.63	11	42/50	12	2.46
1 1/4"	32	70.5	15	140	100	175	115	88.9	15.88	4	13.2	63.5	2	-	11	50/70	12	-
1 1/2"	38	73.5	21	165	114	200	125	98.4	15.88	4	15	73	2	5.24	14	50/70	14	4.82
2"	50	82	21	178	123	200	150	120.7	19.05	4	16.5	92.1	2	7.83	14	50/70	14	7.4
2 1/2"	63.5	100	26	190	146	265	180	139.7	19.05	4	18	104.8	2	12.68	17	70/102	17	12
3"	76	110	26	203	156	265	190	152.4	19.05	4	19.5	127	2	16.2	17	70/102	22	15.5
4"	100	135	28.5	229	182	400	230	190.5	19.05	8	24.3	157.2	2	27.6	22	70/102	27	26.3
6"	150	200	28.5	394	276	800	280	241.3	22.2	8	26.0	215.9	2	58.5	27	102/125	27	-

## 3 PC Ball Valve Flange End



SIZE	ØA	B	E	L	K	M	ØD	C	Øh	n	t	Øg	f	w (kg) 3PC HANDLE	SQ.	PCD	E	w (kg) 3PC ACT.
1/2"	15	50	15	108	76	145	90	60.3	15.88	4	10	34.9	2	1.56	9	42/50	9	1.45
3/4"	20	55	15	117	82	145	100	69.9	15.88	4	11	42.9	2	2.10	9	42/50	9	1.90
1"	25	60.5	15	127	90	175	110	79.4	15.88	4	12	50.8	2	2.80	11	42/50	12	2.60
1 1/4"	32	70.5	15	140	100	175	115	88.9	15.88	4	13.2	63.5	2	-	11	50/70	12	-
1 1/2"	38	73.5	21	165	114	200	125	98.4	15.88	4	15	73	2	5.5	14	50/70	14	5.10
2"	50	82	21	178	123	200	150	120.7	19.05	4	16.5	92.1	2	8.1	14	50/70	14	7.66
2 1/2"	63.5	100	26	190	146	265	180	139.7	19.05	4	18	104.8	2	13.17	17	70/102	17	12.45
3"	76	110	26	203	156	265	190	152.4	19.05	4	19.5	127	2	16.72	17	70/102	22	16
4"	100	135	28.5	229	182	400	230	190.5	19.05	8	24.3	157.2	2	28.4	22	70/102	27	27
6"	150	200	28.5	394	276	800	280	241.3	22.2	8	26.0	215.9	2	58.5	27	102/125	27	-

## 3 PC Ball Valve Screwed End



SIZE	A-S.E	A-T.C	B	E	L	K	M	D	H	G	SQ.	PCD	E
1/2"	15	15	50	15	65	76	145	34	30.45	24.55	9	42 / 50	9
3/4"	20	20	55	15	75	82	145	34	30.45	24.55	9	42 / 50	9
1"	25	25	60.5	15	85	90	175	50.5	46.45	40.55	11	42 / 50	12
1 1/4"	32	32	70.5	15	85	100	175	50.5	46.45	40.55	11	50 / 70	12
1 1/2"	38	32	73.5	21	120	114	200	50.5	46.45	40.55	14	50 / 70	14
2"	50	42.5	82	21	130	123	200	64	59.45	53.55	14	50 / 70	14
2 1/2"	63.5	63.5	100	26	165	146	265	91	86.45	80.55	17	70 / 102	17
3"	76	76	110	26	185	156	265	106	99.95	94.05	17	70 / 102	22
4"	100	100	135	28.5	230	182	400	119	112.95	107.05	22	70 / 102	27

# BALL VALVE

## Sand Casting 2PC / 3PC Design



### Manufacturing Range :

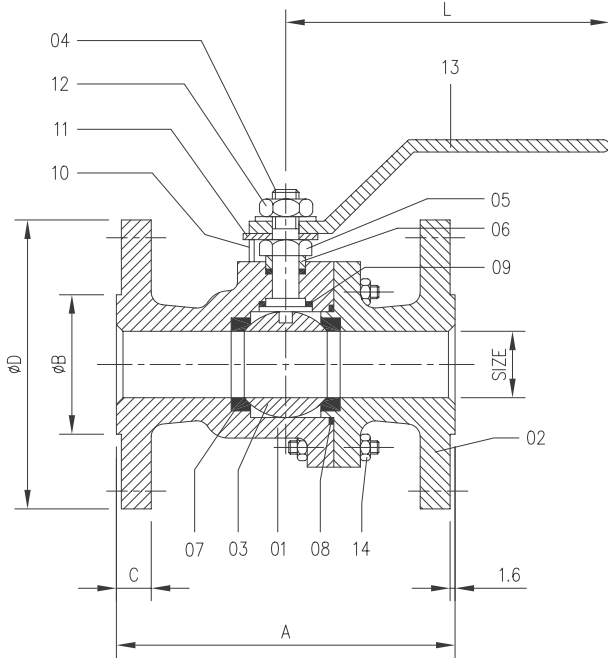
- 1) Size: 2" NB to 12" NB
- 2) Class: 150#, 300#, 600#
- 3) Materials: WCB, LCB, CF8, CF8M, CF3, CF3M

### Specific Features

- Positive Shut-off.
- Compact Design.
- Low-Pressure Drop.
- Longer Life.
- No Lubrication.
- Quick in Action.
- High-Performance
- Stainless steel locking handle.
- Visual Open / Close Indication Simplicity.
- Flanged End, Screwed End BSP/NPT, Butt Weld End.
- Anti-blowout stem
- Floating Ball / Trunnion Mounted Design

## Standards :

Design Standard	BS 5361 / API 6D / ISO 17292
Inspection & Testing Standard	API 598 / BS 5146
Face to Face	ASME B16.10
Flange Connection	ASME B16.5



## 2PC BALL VALVE FLANGE END

P. NO.	ITEM	QTY.	MATERIAL
1	BODY	1	ASTM A 216 Gr. WCB
			C.I. TO IS 210 Gr. FG 220
			AISI 304 OR CF8 (I.C.)
			AISI 316 OR CF8M (I.C.)
2	SIDE PIECE	1	ASTM A 216 Gr. WCB
			C.I. TO IS 210 Gr. FG 220
			AISI 304 OR CF8 (I.C.)
			AISI 316 OR CF8M (I.C.)
3	BALL	1	AISI 304/AISI 316
4	STEM	1	AISI 304/AISI 316
5	GLAND NUT	1	AISI 304/AISI 316
6	GLAND BUSH	1	AISI 304/AISI 316
7	SEAT RING	2	PTFE OR FILLED PTFE
8	BODY SEAL	1	PTFE OR FILLED PTFE
9	STEM SEAL	2	PTFE OR FILLED PTFE
10	STOPPER PIN	1	C.S./S.S.304/S.S.316
11	STOP	1	C.S./S.S.304/S.S.316
12	LOCK NUT	1	C.S./S.S.304/S.S.316
13	LEVER	1	C.S./S.S.304/S.S.316
14	STUD & NUT	REQ.	C.S./S.S.304/S.S.316

ASA - 150							
SIZE NB	A	ØB	C	ØD	E	F	ØG
15	108	35	11	89	4	60	16
20	118	43	13	98	4	70	16
25	127	51	14	108	4	79	16
40	165	73	14	127	4	98	16
50	178	92	16	152	4	121	19
65	190	105	17	178	4	140	19
80	203	127	19	190	4	152	19
100	229	157	24	229	8	216	19
125	254	186	24	254	8	216	22
150	267	216	25	279	8	241	22
200	292	270	29	343	8	296	22

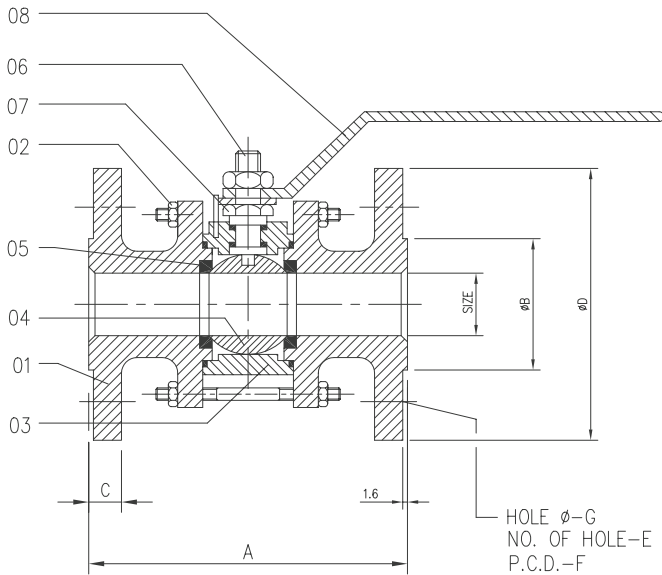
ASA - 300							
SIZE NB	A	ØB	C	ØD	E	F	ØG
40	191	73	21	156	4	114	22
50	216	92	22	165	8	127	22
65	241	105	25	190	8	149	22
80	282	127	29	209	8	168	22
100	305	157	32	254	8	200	22
125	381	186	35	279	8	235	22
150	403	216	37	318	12	270	22
200	419	270	41	381	12	330	25

## Standards :

Design Standard	BS 5361 / API 6D / ISO 17292
Inspection & Testing Standard	API 598 / BS 5146
Face to Face	ASME B16.10
Flange Connection	ASME B16.5

## 3PC BALL VALVE FLANGE END

P. NO.	ITEM	QTY.	MATERIAL
1	END PIECES	2	ASTM A 216 Gr. WCB
			C.I. TO IS 210 Gr. FG 220
			AISI 304 OR CF8
			AISI 316 OR CF8M
			ASTM A 105
			G.M.
2	STUD & NUT	Req.	M.S. ASTM A 193 Gr. B7
			M.S. ASTM A 194 Gr. 2H
			AISI 304
			AISI 316
3	BODY	1	ASTM A 216 Gr. WCB
			C.I. TO IS 210 Gr. FG 220
			AISI 304 OR CF8
			AISI 316 OR CF8M
			ASTM A 105
			G.M.
4	BALL	1	AISI 304/AISI 316
5	SEAT	2	PTFE OR FILLED TEFLON
6	STEM	1	AISI 304/AISI 316
7	INTERLOCK NUT	1	CARBON STEEL
			AISI 410/304/316
8	LEVER	1	CARBON STEEL
			AISI 410/304/316



ASA - 150							
SIZE NB	A	ØB	C	ØD	E	F	ØG
15	108	35	11	89	4	60	16
20	118	43	13	98	4	70	16
25	127	51	14	108	4	79	16
40	165	73	14	127	4	98	16
50	178	92	16	152	4	121	19
65	190	105	17	178	4	140	19
80	203	127	19	190	4	152	19
100	229	157	24	229	8	216	19
125	254	186	24	254	8	216	22
150	267	216	25	279	8	241	22
200	292	270	29	343	8	296	22

ASA - 300							
SIZE NB	A	ØB	C	ØD	E	F	ØG
40	191	73	21	156	4	114	22
50	216	92	22	165	8	127	22
65	241	105	25	190	8	149	22
80	282	127	29	209	8	168	22
100	305	157	32	254	8	200	22
125	381	186	35	279	8	235	22
150	403	216	37	318	12	270	22
200	419	270	41	381	12	330	25

# BALL VALVE

## Forging 3PC Bolted Design



### Manufacturing Range :

- 1) Size: ¼" NB to 2" NB
- 2) Class: 800#, 1500#
- 3) Materials: A105, LF2, F5, F11, A182 (F304 / F316)

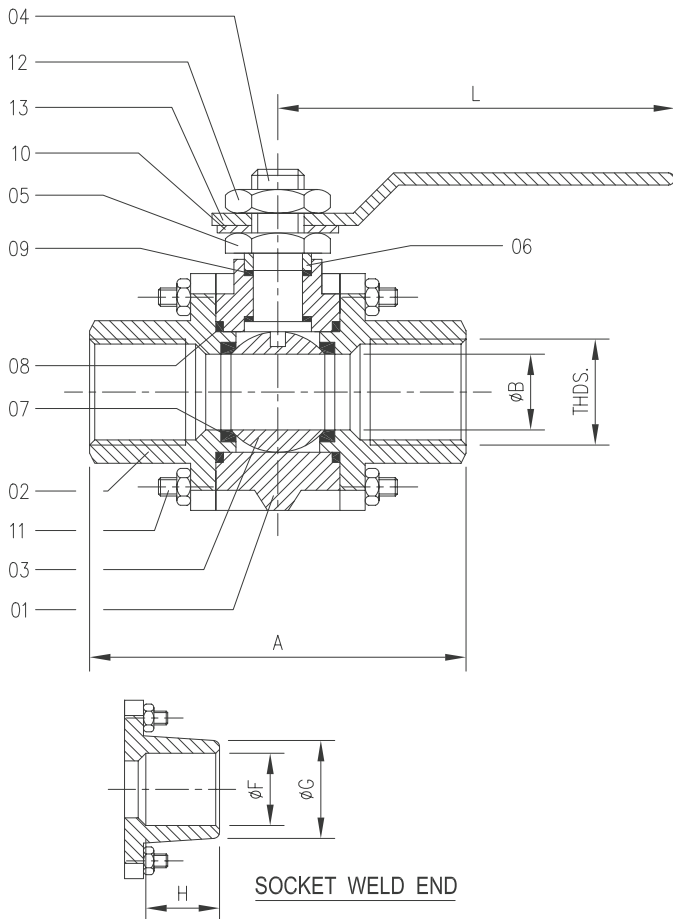
### Specific Features :

- Full port or reduce port.
- Mirror finished SS balls.
- Wide range of seals.
- Anti-blowout stems
- Socket Weld End, Screwed End BSP/NPT, Butt Weld End.



## Standards :

Design Standard	BS 5351 / BS EN 17292
Inspection & Testing Standard	API 598 / BS EN 12266-1
Socket Weld End	ASME B16.11
Screwed End	ASME B20.1
Butt Weld Connection	ASME B16.25
Pressure Temperature Rating	ASME B16.34



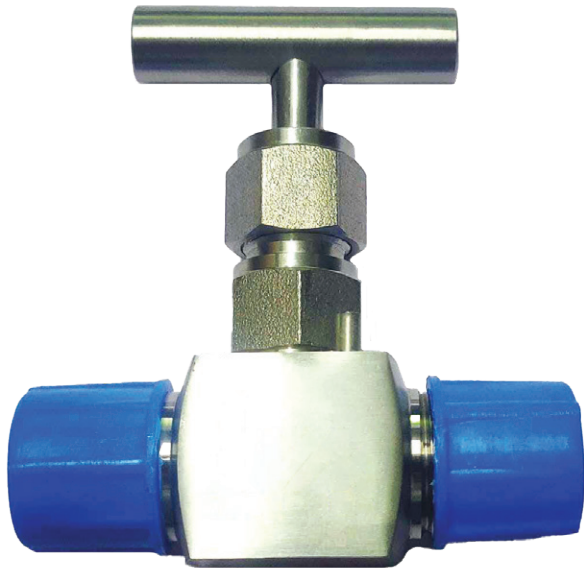
## 3PC BALL VALVE SCREWED END

P. NO.	ITEM	QTY.	MATERIAL
1	BODY	1	ASTM A 216 Gr. WCB
			C.I. TO IS 210 Gr. FG 220
			AISI 304 OR CF8 (I.C.)
			AISI 316 OR CF8M (I.C.)
			ASTM A 105
2	BODY CONNECTOR	1	ASTM A 216 Gr. WCB
			C.I. TO IS 210 Gr. FG 220
			AISI 304 OR CF8 (I.C.)
			AISI 316 OR CF8M (I.C.)
			ASTM A 105
3	BALL	1	AISI 304/AISI 316
4	STEM	1	AISI 304/AISI 316
5	GLAND NUT	1	AISI 304/AISI 316
6	GLAND BUSH	1	AISI 304/AISI 316
7	SEAT RING	2	PTFE OR FILLED PTFE
8	BODY SEALANT RING	2	PTFE OR FILLED PTFE
9	STEM SEAL	2	PTFE OR FILLED PTFE
10	STOPPER	1	C.S./S.S.304/S.S.316
11	STUD & NUT	4	C.S./S.S.304/S.S.316
12	LOCK NUT	1	AISI 304/AISI 316
13	LEVER	1	C.S./S.S.304/S.S.316

ASA - 150							
SIZE NB	A	ØB	L	BSP/BSPT NPT	F	G	H
15	90	13	150	1/2"	21.8	29.0	12.7
20	95	19	150	3/4"	27.3	35.0	19
25	100	25	150	1"	34.1	43.0	22
32	110	32	160	1.1/4"	43	54.0	22
40	120	38	160	1.1/2"	49	58.0	22
50	130	50	160	2"	61.3	71.0	23

ASA - 800							
SIZE NB	A	ØB	L	BSP/BSPT NPT	F	G	H
15	68	12	115	1/2"	21.8	29.0	12.7
20	79	16	122	3/4"	27.3	35.0	19
25	95	18	153	1"	34.1	43.0	22
32	107	24	178	1.1/4"	43	54.0	22
40	117	32	178	1.1/2"	49	58.0	22
50	130	37	178	2"	61.3	71.0	23

# NEEDLE VALVE



## Manufacturing Range :

- 1) Size: 1/8", 1/4", 3/8", 1/2", 3/4" & 1"
- 2) Class: 3000psi, 6000psi, 10000psi
- 3) Materials: SS 304 / 316

## Standards :

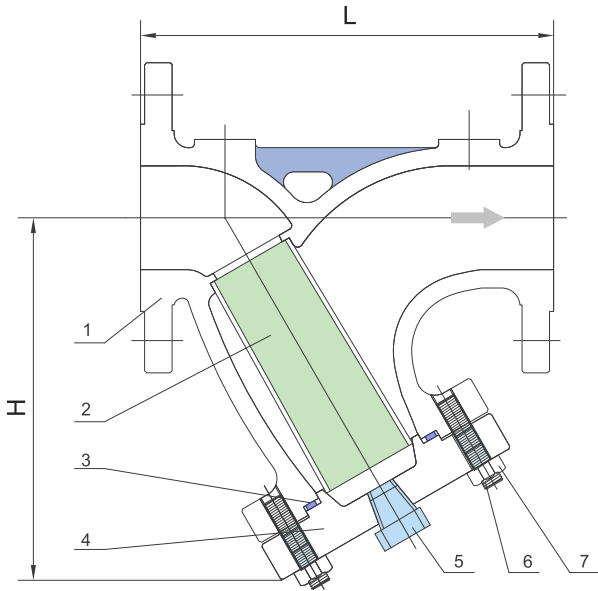
Design Standard	BS 5351 / BS EN 17292
Inspection & Testing Standard	MSS SP 99
Max Temp.	240° C
Stem	Conical tip press fitted (Hard Chrome)
Packing	PTFE

## Application :

- High pressure line Shut off
- Instrument isolation
- Drain valve
- Liquid and vapor service

# Y - STRAINER

Cast Steel



## Standards :

Design	ASME B16.34
Face to Face	ASME B16.10
End Flange	ASME B16.5
Test	API 598

## Standard Materials of Parts

ITEM	PARTNAME	MATERIAL
1	Body	ASTMA 216 GR.WCB
2	Screen	ASTMA 276 Type 304
3	Gasket	304 + Graphite
4	Cover	ASTMA 216 GR.WCB
5	Plug	ASTMA 105
6	Cover Bolts	ASTMA 193 GR.B7
7	Cover Bolt Nuts	ASTMA 194 GR.2H

CLASS - 150									
SIZE NB	in	2"	2.5"	3"	4"	6"	8"	10"	12"
	mm	50	65	80	100	150	200	250	300
L	in	8	8.5	9.5	11.5	16	19.5	24.5	27.5
	mm	203	216	241	292	406	495	622	699
H	in	5.71	7.2	8.11	8.98	12.95	17.32	19.96	23.39
	mm	145	183	206	228	329	440	507	594
Weight	kg	12	18	21	32	48	105	169	215

CLASS - 300									
SIZE NB	in	2"	2.5"	3"	4"	6"	8"	10"	12"
	mm	50	65	80	100	150	200	250	300
L	in	10.5	11.5	12.5	14	17.5	22	24.5	28
	mm	267	292	318	356	445	559	622	711
H	in	6.7	7.28	9.25	11.42	14.76	17.72	22.64	26.18
	mm	170	185	235	290	375	450	575	665
Weight	kg	15	18	35	51	92	182	285	307

## We are also supplying below products :

- Butterfly Valve
- Dual Plate Check Valve
- Safety Relief Valve
- Y Strainer
- Instrumentation ball Valve
- Sight glass
- Disc Check Valve



## Where Are We ?

- Sugar mill.
- Marine & Mining.
- Distillery Plant.
- Fertilizer Plant.
- Pulp & Paper mill.
- Industrial Chemical Piping.
- Oil, Gas, Petrochemical Plant.
- Textile and Process Industries.
- Thermal and Nuclear Power Plant.

### **MULTITECH ENGINEERING**

Reg. Off. & Works : L-82, G.I.D.C. Estate,  
Nr. Water Tank, Odhav, Ahmedabad-382415

✉ info@multitecheng.com

🌐 www.multitecheng.com

✉ multitecheng@gmail.com

☎ (079) 22877661